

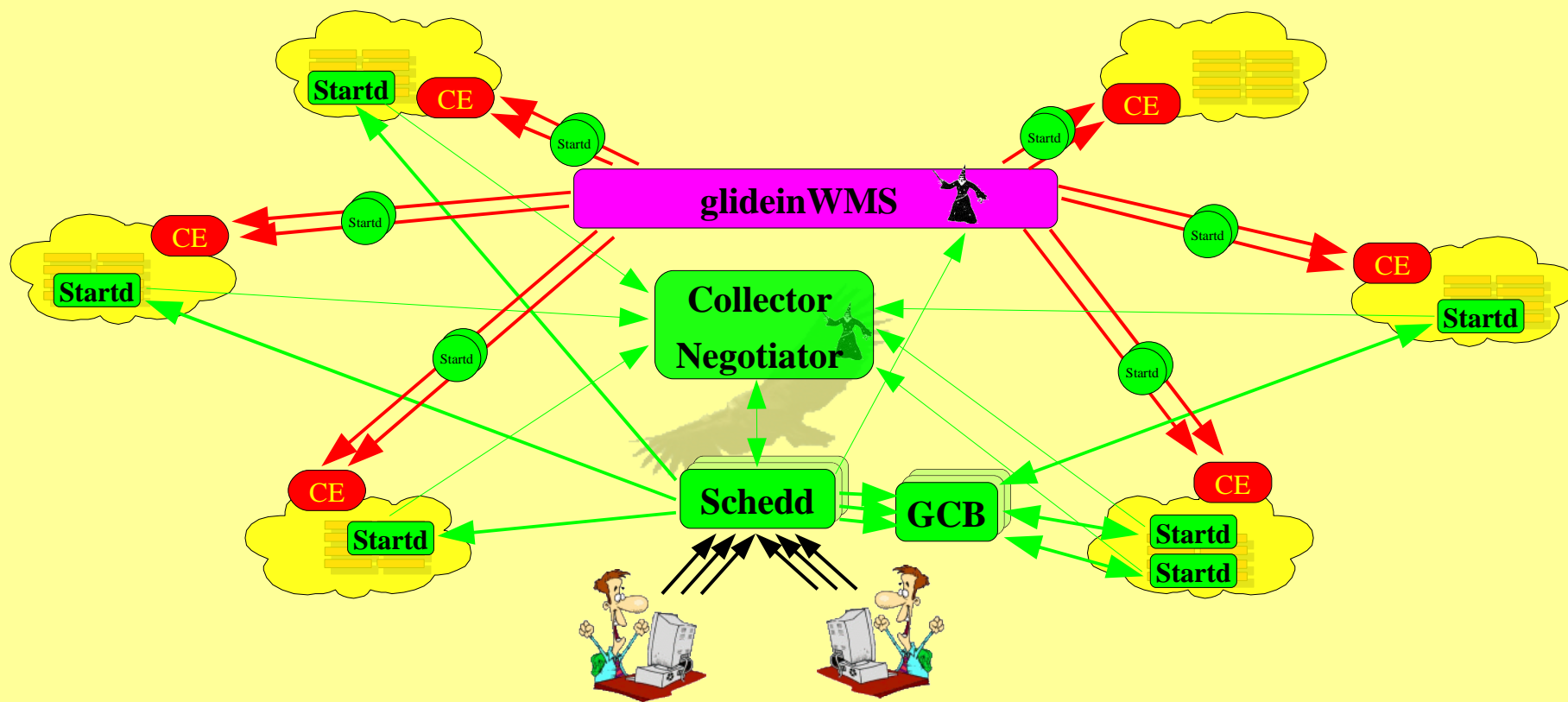
Just-in-time WMS Meeting – March 9th, 2007

glideinWMS

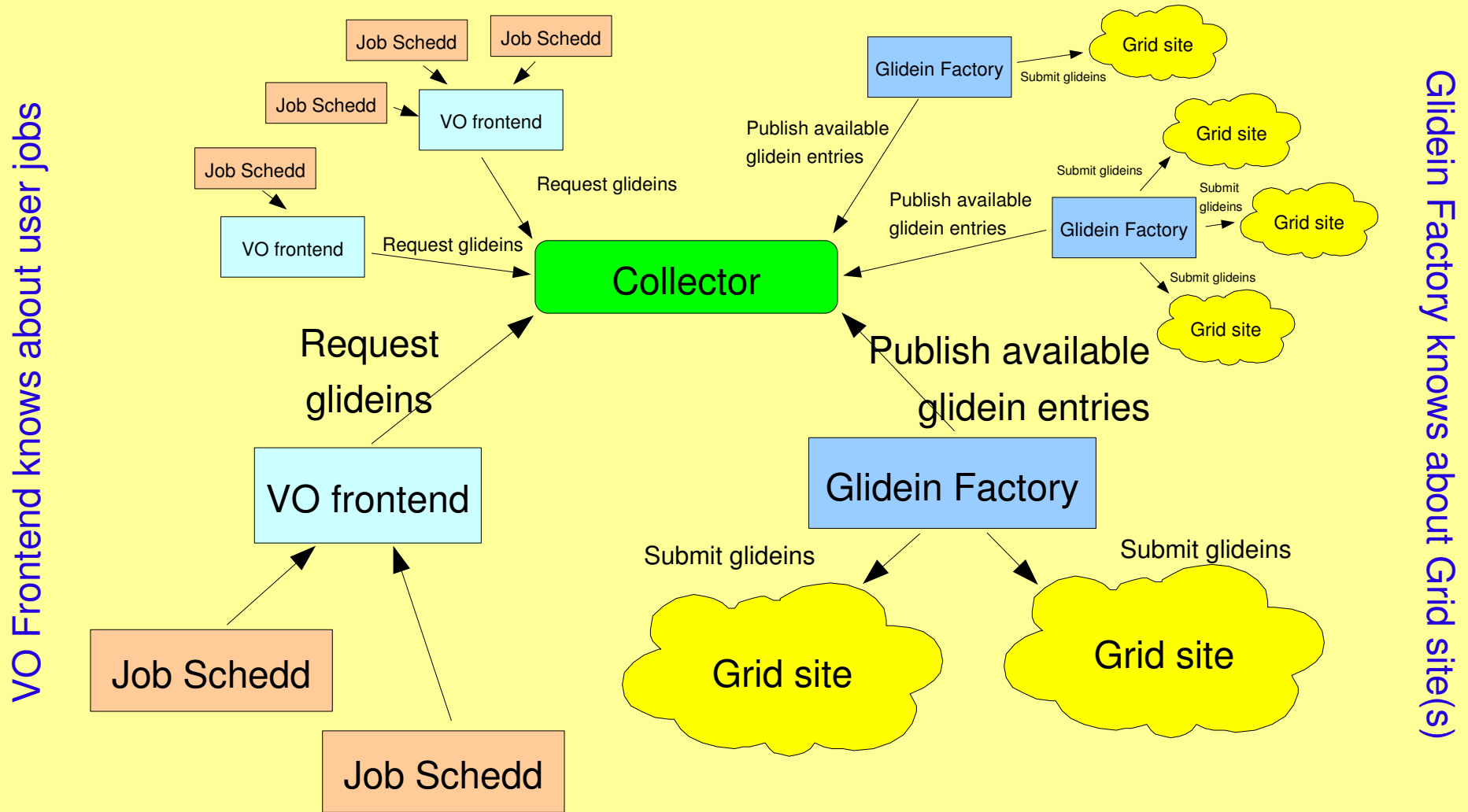
by Igor Sfiligoi

glideinWMS overview

- Essentially a standard Condor pool, with startds started in a dynamic way



glideinWMS details



Glidein factory ClassAd

Due to Condor limitations,
define also GlideinMyType

Published classad

```

MyType="glidefactory"
Name="entry@factory"
FactoryName="factory"
GlideinName="entry"
Attribute1="..."
...
AttributeN="..."
GlideinParamXXX="val1"
...
GlideinParamYYY="valN"
    
```

Attributes describe the glidein
like:

```
ARCH="INTEL", MaxHours=72, Site="Florida"
```

Parameters set glidein parameter defaults

like:

```
CONDOR_HOST="UNDEFINED",SEC_DEFAULT_ENCRYPTION=OPTIONAL
MinDisk=16G, CheckFilesExist="/tmp/CMS,$DATA/OSG"
```

VO Frontend ClassAd

```

Published classad
MyType="glideclient"
Name="reqX@client"
ClientName="client"
ReqName="reqX"
ReqGlidein="entry@factory"
ReqIdleGlideins=nr
ReqMaxRun=nr
ReqMaxSubmitXHour=nr
GlideinParamWWW="val1"
...
GlideinParamZZZ="valY"
    
```

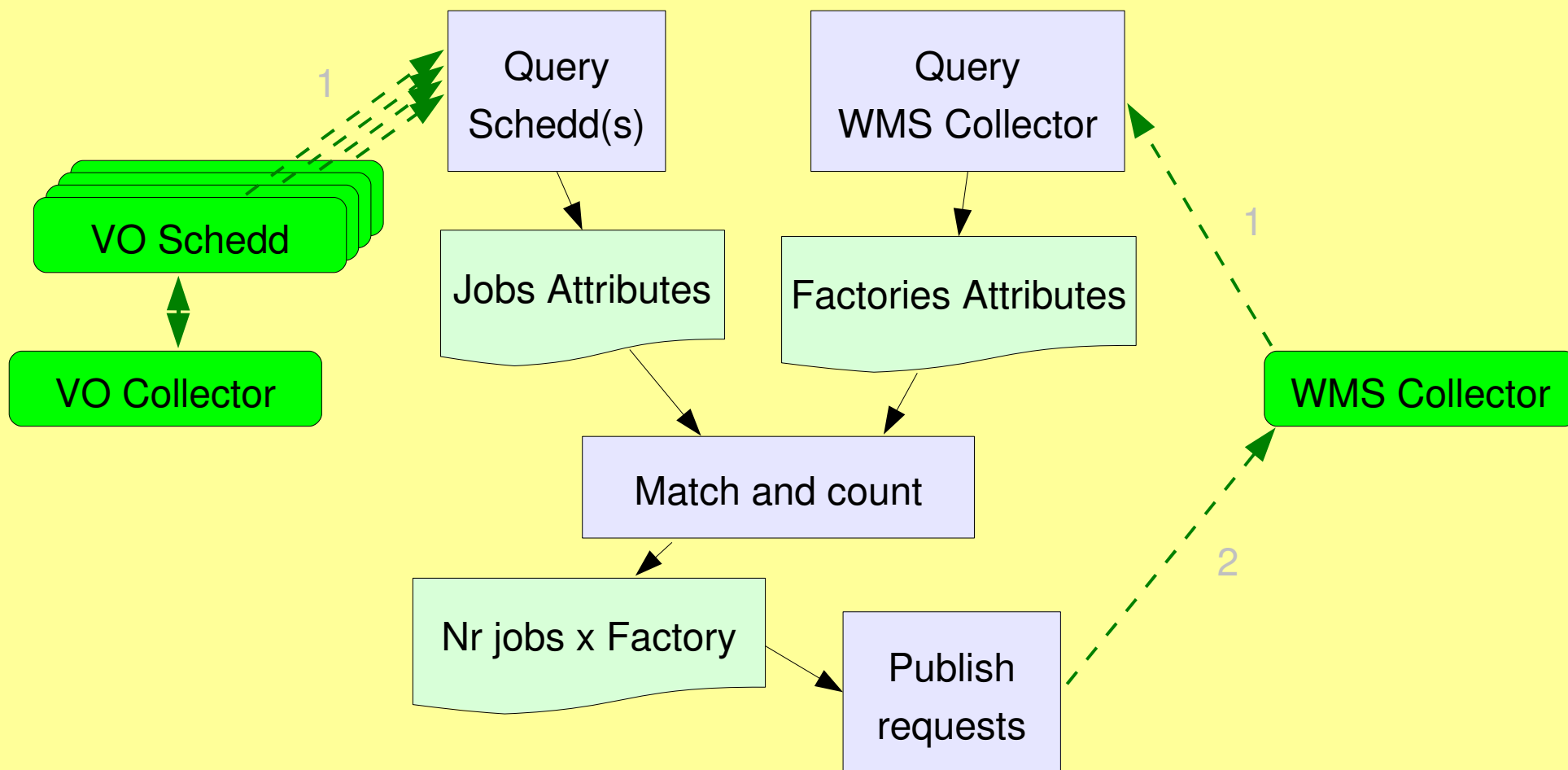
Due to Condor limitations,
define also GlideinMyType

Limits on the amount of
glideins submitted envisioned
but not yet implemented

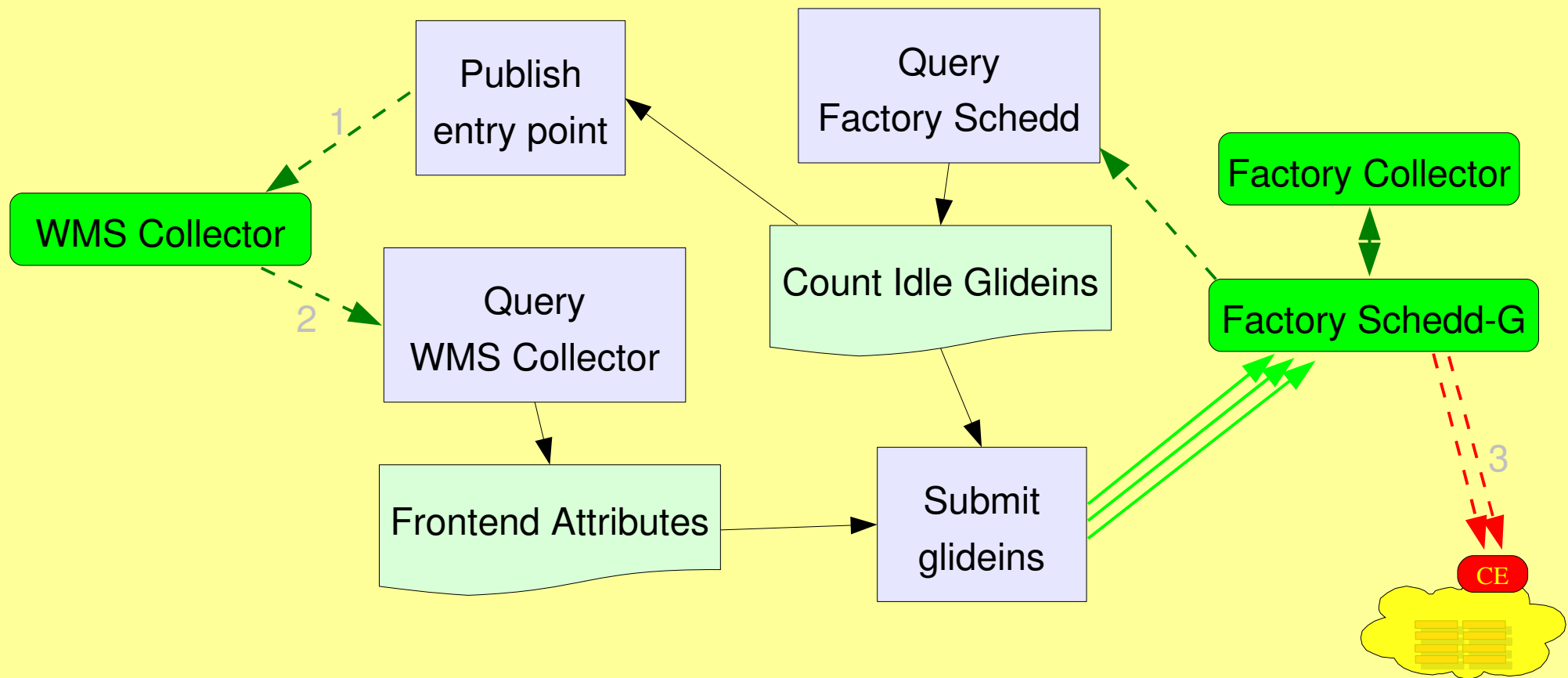
Trying to keep a steady stream
of glideins starting

GlideParamXXX must match the names
published by the factory

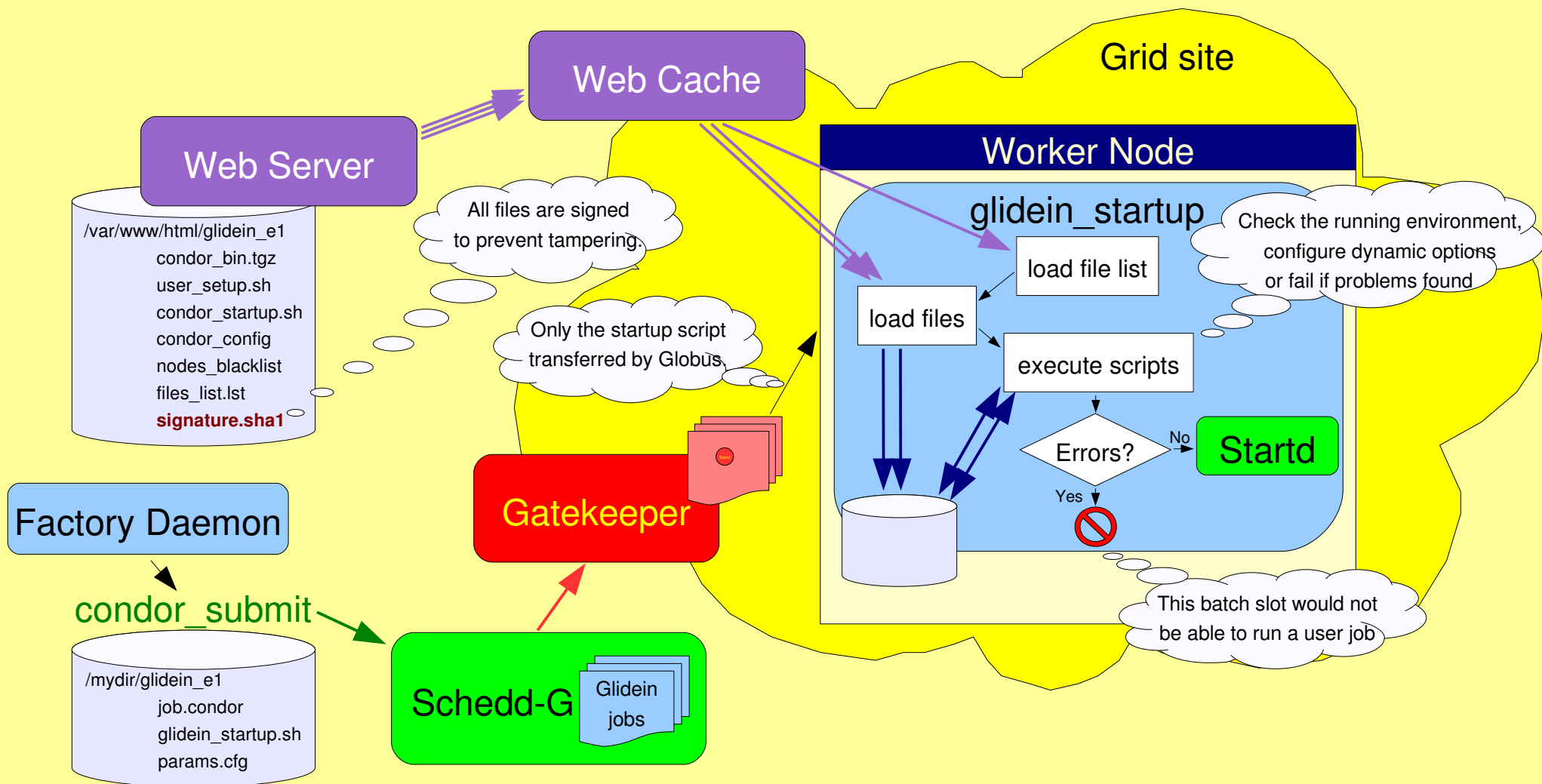
VO Frontend Acts as a Matchmaker



Glidein Factory blindly executes orders



Glidein internals



glideinWMS security

- All security handled by Condor
- glideins use GSI for authentication
 - proxy delivered by Grid tools
- WMS collector can use any Condor supported mechanism